

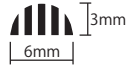
Packaging

For Restaurants, Supermarkets, Confectionery shops, Industrial factories

Ultrasonic Point Sealer 'QUPPA/QP-01'

Easy to pack, easy to open / Maintains product appeal with inconspicuous spot-weld / For food safety measures



Point sealing approx.




- Very easy to use



Press the hand piece

2 seconds



Complete spot-welding

You can easily weld plastic packaging at a point like a stapler, but with no staples. Insert the sealing surface between the teeth and press. The hand piece generates ultrasonic waves and spot-welds by heat in two seconds or less.

-Applications



-Ideal for food safety measures

You are able to prevent unwanted materials such as staples, rubber bands, etc., from entering packages sealed by QUPPA.

-Easy to pack, easy to open.

Easily and efficiently seals by inserting packaging in the handset and lightly pressing it together. Packages open easily without the nuisance of tape.

-Presents packaged goods in an attractive way.

Films, wrap, staples, rubber bands and cellophane tapes disrupt product appeal. But using QUPPA helps to maintain that appeal with small inconspicuous spot-welds.

No needed



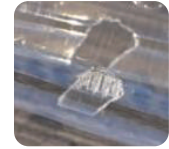
Maintains product appeal



Added level of safety

Ultrasonic Sealer can be used to create a type of tamper proof seal easily at low cost, and can also seal any plastic containers that you may already have.

With QUPPA, you can be more confident that your snap-on and clam shell packages will be securely and reliably sealed.



-You can easily see if the seal has been broken.

Compatible sealing materials

*For upper side

	PSP	OPS	PVC	HIPS	PPF	PP	A-PET
PSP	○	○	△	○	×	×	○
OPS	○	○	△	○	○	○	○
PVC	×	×	△	△	×	△	△
HIPS	○	○	×	○	×	×	○
PPF	×	×	×	×	○	○	×
PP	×	×	×	×	○	○	×
A-PET	×	×	△	○	○	○	○

*For lower side

△ : Continued use may cause the teeth to rust

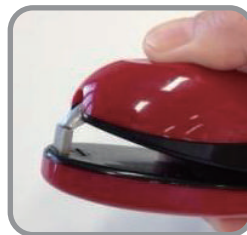
Product features (QP-01)



Easy to see contact points



No risk of being burned.
It does not work when you have your finger pinched.



Does not work when teeth contact directly.



Magnetized hand piece.
Internal magnet holds the hand piece easily



No need for a transformer

Specifications (QP-01)

Frequency	57kHz
Output	20W
Power Consumption	40VA
Power Source	100-240V AC50/60Hz
Dimensions / Main unit	W179*D183*H66 mm
Dimensions / Hand piece	W36*D125*H54 mm
Weight / Main unit	1000g
Weight / Hand piece	200g
Power cord	Coiled cord

 **Asahi Industry Co., Ltd.**

Head Office: 1-11-22, Yonban, Atsuta-Ku, Nagoya, Aichi, Japan

TEL : +81-52-671-5193 FAX : +81-52-671-5196

E-mail : info_e@asahi-sg.co.jp

H.P. : <http://asahi-packaging.com>